



Coupled Inductors and the Linear Transformer Model

By: Larry Schooley
University of Arizona
Department of Electrical and Computer Engineering
Tucson, AZ

Abstract:

In this lab you will investigate the use of the linear transformer model to describe the behavior of coupled inductors. The first portion of the lab will involve determination of the parameters used in the linear transformer model. These parameters will then be verified by using them to predict the behavior of a circuit which includes coupled inductors.

Equipment:

- Agilent DSO5012A 5000 Series Oscilloscope
 - Agilent 33220A Function / Arbitrary Waveform Generator
- 1) For this lab the internal resistance of the function generator, R_s , must be determined exactly. Inductances are difficult to measure correctly (even with specialized equipment), so accuracy will become especially important in your calculations of component values. A simple model of the function generator is an independent voltage source with a series resistor (see the left side of figure 2). However, R_s is effectively inside the function generator box, so you cannot directly measure it with an ohmmeter. Keeping this in mind, develop an experimental method to determine the value of R_s . (Hint: Think about how a voltage divider works.)
 - 2) Consider the linear transformer model shown in figure 1. Develop an experimental procedure for determining the magnitude of the self-inductance of the coils. (Note: this procedure cannot include the use of a L-C meter.)

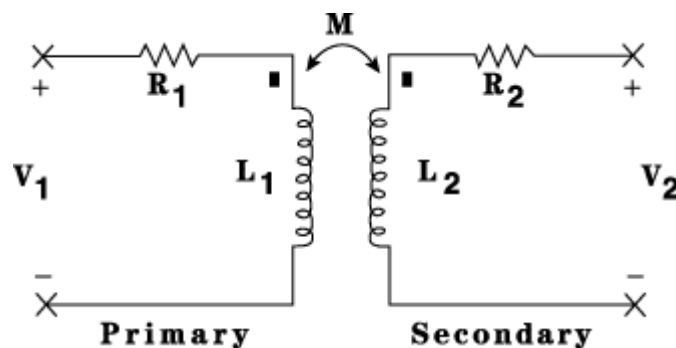


Figure 1: The Linear Transformer Model

- 3) From the linear transformer model in figure 1, it is possible to determine the mutual inductance, M , in two steps:
 - a. The first step is to determine I_1 , the current in the primary. Explain how this can be done in the lab.
 - b. The second step involves using I_1 to find M . Develop an equation that can be used in the lab directly to determine M .



- 4) Consider the linear transformer given in figure 2 below. Given that the frequency of the input is $f = 500 \text{ kHz}$, $R_s = 50 \text{ } \Omega$, and the voltage at $V_s = 1 \text{ V}_p$ find:
 - a. the reflected impedance seen at the primary.
 - b. the reflected impedance seen at the secondary. (Leave the load in place and assume that $V_s = 0 \text{ volts}$.)
 - c. the current through the 10 ohm load element.
 - d. the current in the primary coil.

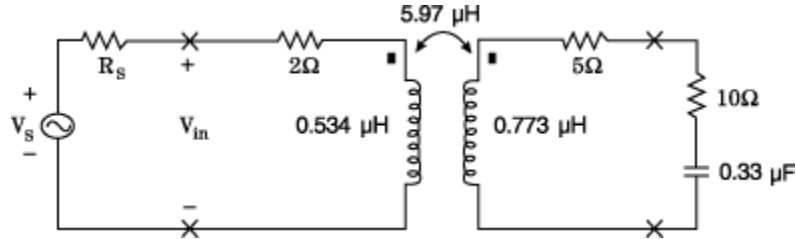


Figure 2: Loaded Linear Transformer

Experiment:

- 1). First, you will determine the linear transformer parameters. Due to the low inductance values in your transformer, a high input frequency is needed-use a frequency of 500 kHz for all sources.
 - a. Determine the internal resistance of the function generator (R_s) using the method from the Prelab.
 - b. Measure the series resistance in the primary (R_1) and then the secondary resistance (R_2).
 - c. Using the method you found in part I of the Prelab determine the self-inductance of the primary winding (L_1).
 - d. Repeat with the secondary winding (L_2).
 - e. Using the method you found in part II of the Prelab determine the mutual inductance (M).
 - f. The final thing you need to determine is the dot markings for the transformer. Assuming the dot on the primary is on the "plus" terminal, determine if the dot on the secondary should go on the "+" or "-" terminal.

Question 1:

Draw a schematic of your complete linear transformer model, labeling all of the components with their experimental values.

- 2) Load the secondary side of the transformer with a 10 ohm resistor in series with a 0.33 micro-farad capacitor. Drive the primary side of the transformer with a 1 Vp sine wave at 500 kHz. Note: you will need to set the function generator output to 1 Vp before attaching it to the circuit, otherwise you will be compensating for the loading effects of the circuit.
 - a. Measure the voltage across R_1 and L_1 .
 - b. Determine the current in the primary.

Question 2:



Using the results of 2(a) and 2(b) above, determine the impedance seen at the terminals of the primary. Using the data from Part I you can also calculate a predicted value for this impedance. Do this and compare the results.

- c. Measure the voltage across the load.
- d. Measure the current in the secondary.

Question 3:

Compare the measured secondary current and voltage to the predicted values you find from the linear transformer model. Note: Since your values for R_1 , R_2 , L_1 , L_2 and M will be different from those used in the prelab, you will need to put your experimental values into the model and recalculate the secondary voltage, current, and impedance.

Discussion:

Considering the basic physical construction of the transformer-two wires wound on top of each other-explain the origin of each component in the circuit model.

These experiments have been submitted by third parties and Agilent has not tested any of the experiments. You will undertake any of the experiments solely at your own risk. Agilent is providing these experiments solely as an informational facility and without review.

AGILENT MAKES NO WARRANTY OF ANY KIND WITH REGARD TO ANY EXPERIMENT. AGILENT SHALL NOT BE LIABLE FOR ANY DIRECT, INDIRECT, GENERAL, INCIDENTAL, SPECIAL OR CONSEQUENTIAL DAMAGES IN CONNECTION WITH THE USE OF ANY OF THE EXPERIMENTS.

射频和天线设计培训课程推荐

易迪拓培训(www.edatop.com)由数名来自于研发第一线的资深工程师发起成立,致力并专注于微波、射频、天线设计研发人才的培养;我们于 2006 年整合合并微波 EDA 网(www.mweda.com),现已发展成为国内最大的微波射频和天线设计人才培养基地,成功推出多套微波射频以及天线设计经典培训课程和 ADS、HFSS 等专业软件使用培训课程,广受客户好评;并先后与人民邮电出版社、电子工业出版社合作出版了多本专业图书,帮助数万名工程师提升了专业技术能力。客户遍布中兴通讯、研通高频、埃威航电、国人通信等多家国内知名公司,以及台湾工业技术研究院、永业科技、全一电子等多家台湾地区企业。

易迪拓培训课程列表: <http://www.edatop.com/peixun/rfe/129.html>



射频工程师养成培训课程套装

该套装精选了射频专业基础培训课程、射频仿真设计培训课程和射频电路测量培训课程三个类别共 30 门视频培训课程和 3 本图书教材;旨在引领学员全面学习一个射频工程师需要熟悉、理解和掌握的专业知识和研发设计能力。通过套装的学习,能够让学员完全达到和胜任一个合格的射频工程师的要求...

课程网址: <http://www.edatop.com/peixun/rfe/110.html>

ADS 学习培训课程套装

该套装是迄今国内最全面、最权威的 ADS 培训教程,共包含 10 门 ADS 学习培训课程。课程是由具有多年 ADS 使用经验的微波射频与通信系统设计领域资深专家讲解,并多结合设计实例,由浅入深、详细而又全面地讲解了 ADS 在微波射频电路设计、通信系统设计和电磁仿真设计方面的内容。能让您在最短的时间内学会使用 ADS,迅速提升个人技术能力,把 ADS 真正应用到实际研发工作中去,成为 ADS 设计专家...



课程网址: <http://www.edatop.com/peixun/ads/13.html>



HFSS 学习培训课程套装

该套课程套装包含了本站全部 HFSS 培训课程,是迄今国内最全面、最专业的 HFSS 培训教程套装,可以帮助您从零开始,全面深入学习 HFSS 的各项功能和在多个方面的工程应用。购买套装,更可超值赠送 3 个月免费学习答疑,随时解答您学习过程中遇到的棘手问题,让您的 HFSS 学习更加轻松顺畅...

课程网址: <http://www.edatop.com/peixun/hfss/11.html>

CST 学习培训课程套装

该培训套装由易迪拓培训联合微波 EDA 网共同推出,是最全面、系统、专业的 CST 微波工作室培训课程套装,所有课程都由经验丰富的专家授课,视频教学,可以帮助您从零开始,全面系统地学习 CST 微波工作的各项功能及其在微波射频、天线设计等领域的设计应用。且购买该套装,还可超值赠送 3 个月免费学习答疑...

课程网址: <http://www.edatop.com/peixun/cst/24.html>



HFSS 天线设计培训课程套装

套装包含 6 门视频课程和 1 本图书,课程从基础讲起,内容由浅入深,理论介绍和实际操作讲解相结合,全面系统的讲解了 HFSS 天线设计的全过程。是国内最全面、最专业的 HFSS 天线设计课程,可以帮助您快速学习掌握如何使用 HFSS 设计天线,让天线设计不再难...

课程网址: <http://www.edatop.com/peixun/hfss/122.html>

13.56MHz NFC/RFID 线圈天线设计培训课程套装

套装包含 4 门视频培训课程,培训将 13.56MHz 线圈天线设计原理和仿真设计实践相结合,全面系统地讲解了 13.56MHz 线圈天线的工作原理、设计方法、设计考量以及使用 HFSS 和 CST 仿真分析线圈天线的具体操作,同时还介绍了 13.56MHz 线圈天线匹配电路的设计和调试。通过该套课程的学习,可以帮助您快速学习掌握 13.56MHz 线圈天线及其匹配电路的原理、设计和调试...

详情浏览: <http://www.edatop.com/peixun/antenna/116.html>



我们的课程优势:

- ※ 成立于 2004 年,10 多年丰富的行业经验,
- ※ 一直致力并专注于微波射频和天线设计工程师的培养,更了解该行业对人才的要求
- ※ 经验丰富的一线资深工程师讲授,结合实际工程案例,直观、实用、易学

联系我们:

- ※ 易迪拓培训官网: <http://www.edatop.com>
- ※ 微波 EDA 网: <http://www.mweda.com>
- ※ 官方淘宝店: <http://shop36920890.taobao.com>